



POWERED BY  DUG

DYNAMICS CON LIVE

MAY 2024

What's New in Dynamics 365 Supply Chain Management

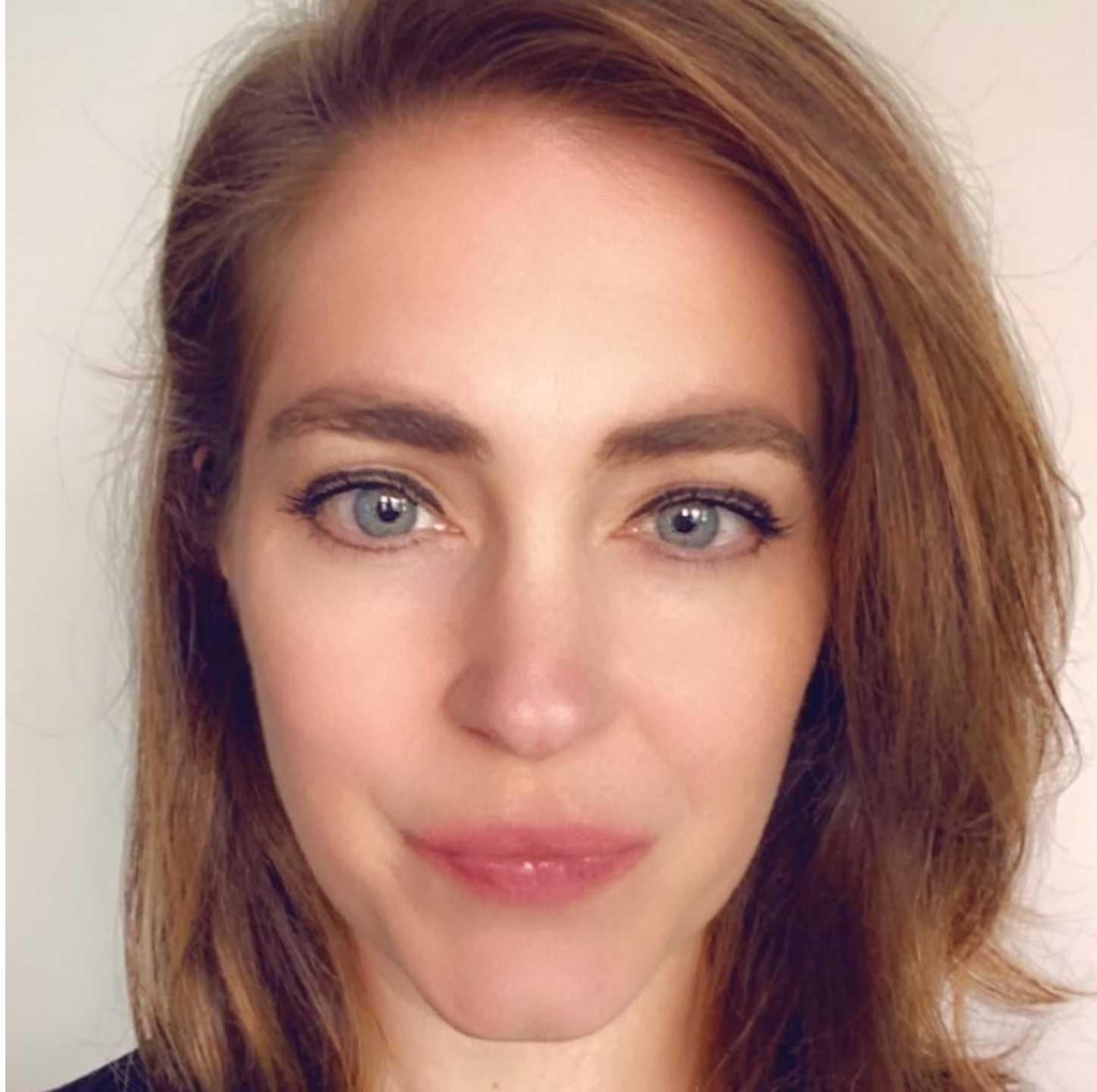


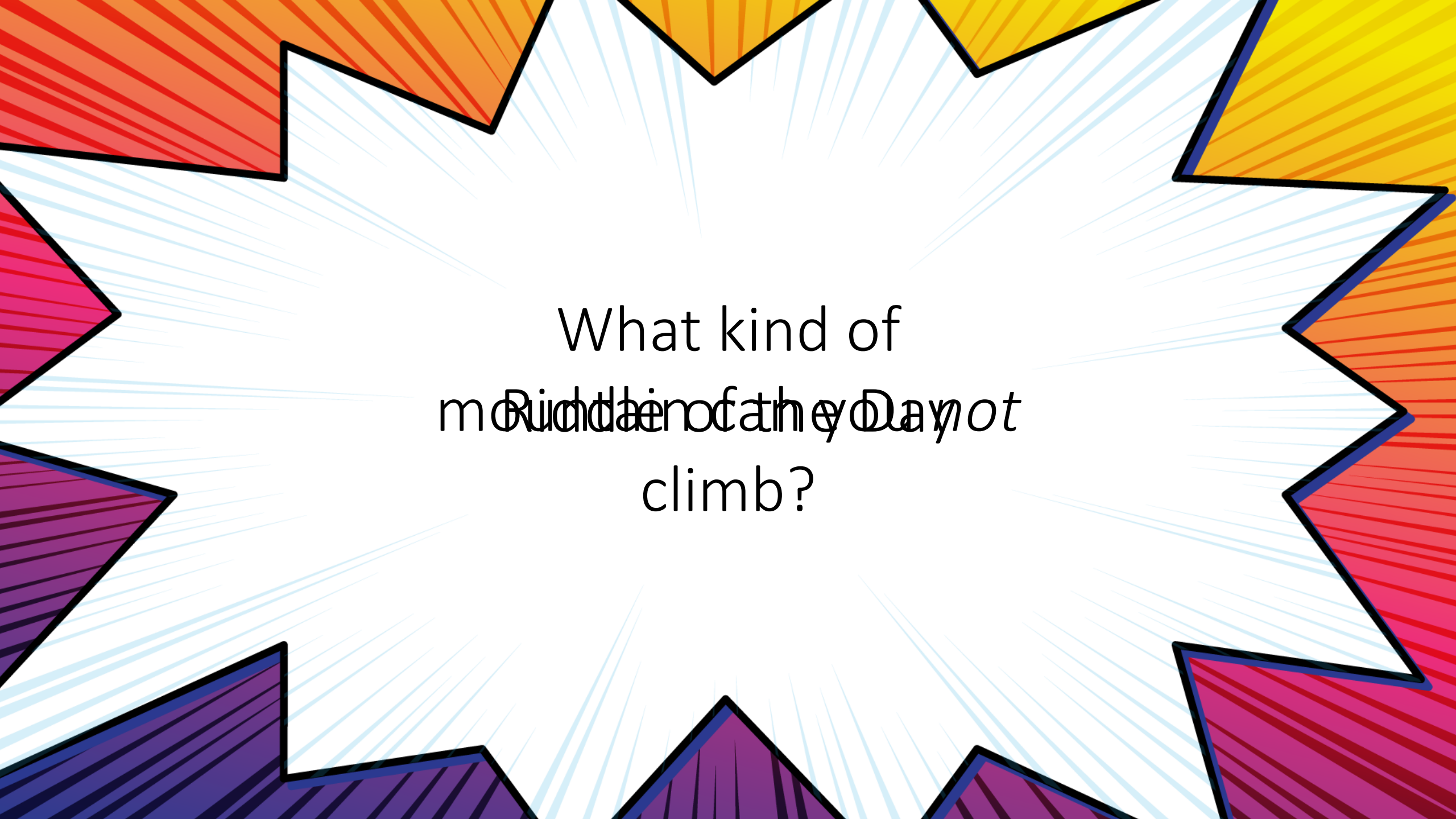
Nicole Joyce

ngump@microsoft.com

Sr. FastTrack Solution Architect
Microsoft

[linkedin.com/in/nicolegump/](https://www.linkedin.com/in/nicolegump/)





What kind of
moulinet can they *not*
climb?

Agenda

- Keeping up with new features
- Feature highlights from Wave 1 2024
- Deprecated features
- Q&A



Keeping up with new features



New feature release process

2 waves per year (dates are version GA)

- **Wave 1: April – September**
- Wave 2: October – March

4* service updates (versions) per year

- Recently updated from 7 updates/year
- Additional auto-update window introduced

1* pause update allowed

- Allowable consecutive pauses reduced from 3 to 1



Wave 1 release timeline

10.0.39

Preview: January 29th

GA: March 15th

WAVE 2

10.0.41

Preview: July 29th

GA: September 13th

10.0.40

Preview: April 26th

GA: June 7th



Resources

Release Plans

Announces each
wave

What's new or changed

Announces each
version

Blogs

Summarizes wave and
version releases

TechTalks

Deep dives on features
after releases





Feature
highlights

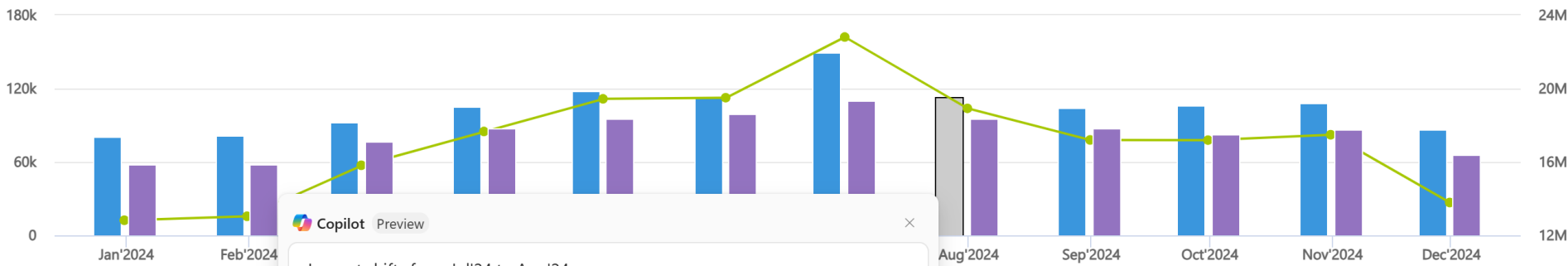
Demand Plan 2024 - Saved

Time Series

Output **General**

Insights

Timeline



Copilot Preview

Largest shifts from Jul'24 to Aug'24

- 1. The demand for **Store 3** has decreased by **26%** or **-11638 units**.
- 2. The demand for **Store 2** has decreased by **24%** or **-7859 units**.
- 3. The demand for **Distribution center** has decreased by **24%** or **-6991 units**.
- 4. The demand for **Store 1** has decreased by **23%** or **-5461 units**.
- 5. The demand for **Store 4** has decreased by **23%** or **-4504 units**.

AI-generated content may be incorrect. [Terms](#)

Time Series values

Warehouse Location Name		Feb'2024	Mar'2024	Apr'2024	May'2024	Jun'2024	Jul'2024
Distribution center	Demand Plan 2024	15,546 ▲	19,148 ▲	21,385 ▲	22,933 ▲	23,522 -	29,640 -
Store 1	Demand Plan 2024	12,172 ▲	12,191 ▲	15,167 ▲	16,893 ▲	18,310 -	23,440 -
Store 2	Demand Plan 2024	17,206 ▲	17,471 ▲	21,477 ▲	23,979 ▲	25,787 ▲	33,310 -
Store 3	Demand Plan 2024	25,452 ▼	26,232 ▼	23,690 ▼	28,430 ▼	35,566 ▼	43,610 ▼

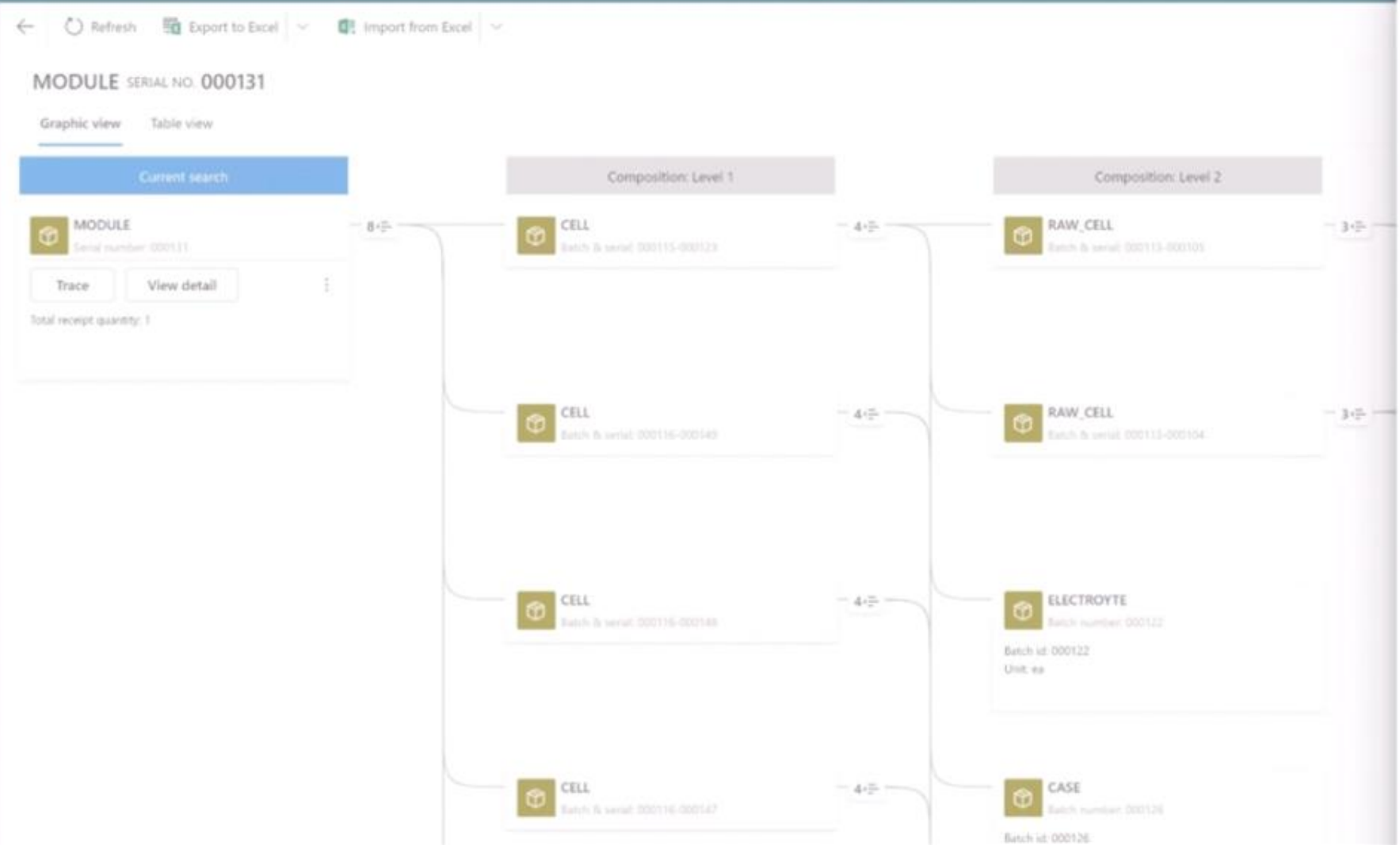
For more on AI

Copilot Capabilities in Dynamics 365 SCM

- TODAY! At 3:15 PM in Evergreen EF
- Presented by: Phillip Seaton



- Home
- Recent
- Pinned
- Traceability
 - Up and downstream t...
 - Product search
 - Insights
 - Set up



MODULE

- 10/18/2023 6:14:06 AM
USMF Shipment USMF-000003 Confir...
Terry Alvarado
- 10/17/2023 6:14:06 AM
USMF Shipment USMF-000003 Load
Terry Alvarado
- 10/16/2023 6:14:06 AM
USMF Sales 00000130 Reservation
Terry Alvarado
- 10/15/2023 9:14:06 AM
Start Production of MODULE 00013...
Terry Alvarado
Production Order: P000264
Activity: Production Consumption
UserName: Terry Alvarado
Received quantity: 1 ea
Receipts:
Item id: MODULE Serial number: 000131
Quantity: 1 ea
Consumptions:
Item id: CELL Batch number: 000115
Serial number: 000123 Quantity: 1 ea
Item id: CELL Batch number: 000116





Associate



P000123



D8101 Speaker

Q Search



D8101 Speaker

SN 7827822_2872



D81011 Tweeter M8101 3.32

SN 9188871_1132



D81012 Bass unit M8101 3.42

SN 4444771_4567



D81013 BT control M8101 3.52



2 of 3



Undo



Redo



Reset
all



Supervisor
access



Instructions



Expand
BOM



Associate
manually



Cancel



OK

Fundamentals

Inventory & logistics

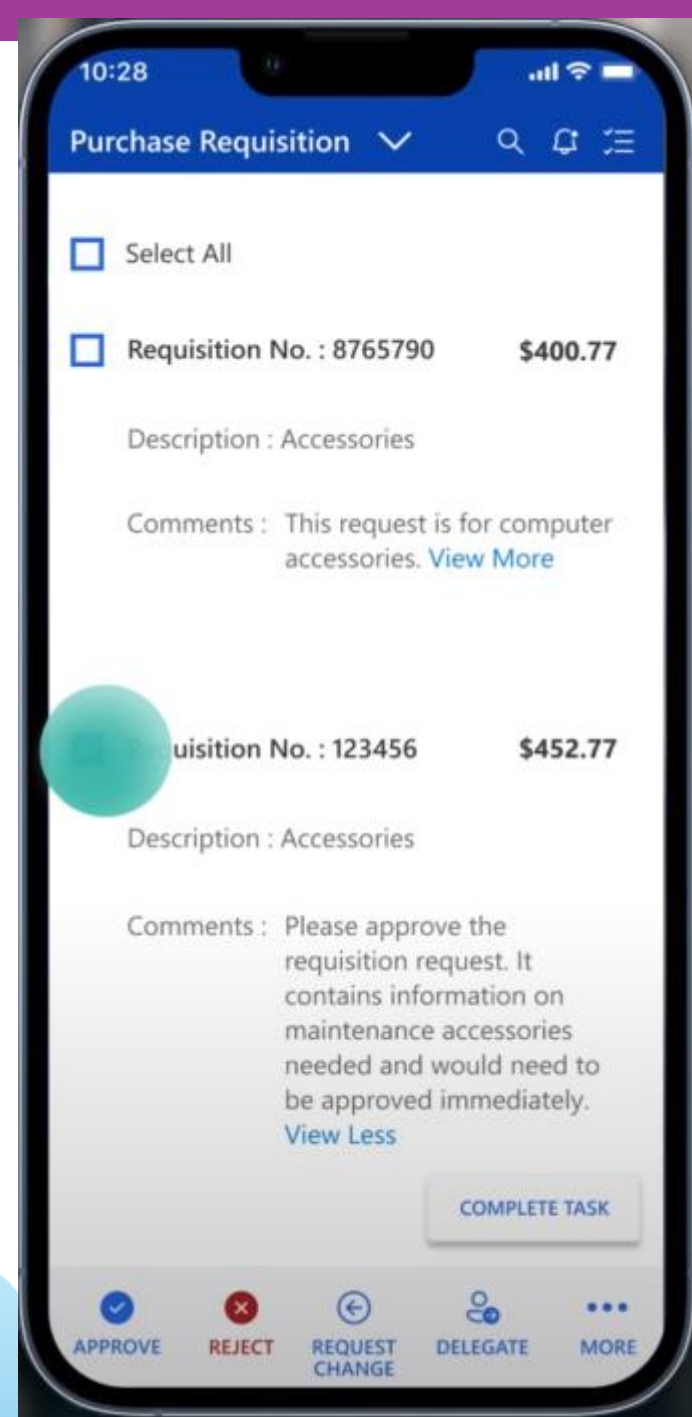
[Supply Chain Traceability \(preview\)](#)

Manufacturing & asset management

[Track and trace serial and batch](#)

Procurement

[Approve POs via mobile app](#)



Sales order | My view

000861 : Forest Wholesales

Lines Header

Sales order header

DELIVERY ADDRESS

Name
Forest Wholesales

Delivery address
Forest Wholesales

Address
123 White Road
Los Angeles, CA 90004
USA

DELIVERY DATE

Requested ship date
3/26/2023

Requested receipt date
3/27/2023

[Simulate delivery dates](#)

Confirmed ship date

Confirmed receipt date

REFERENCES

Customer reference

Customer requisition

DISCOUNTS

Total discount %
0.00

WAREHOUSE

Release status
Open

Sales order lines

[+ Add line](#) [+ Add lines](#) [Add products](#) [Remove](#) [Sales order line](#) [Financials](#) [Inventory](#) [Product and supply](#) [Update line](#) [Warehouse](#) [Retail](#)

	T...	Variant number	Item number	Product name	Sales category	CW quantity	CW unit	Quantity	Unit	Delivery type	CW deliver...	Adju
○			MGCR1	Magnetic Gyrocompasse ...				1.00	ea	Stock		

Line details

Standard view

Check export control

Purpose

Sales

Lines

ID: 1, Quantity: 1.00, Description: MGCR1

EAR: 6A991 (0.00%)

Restriction: Licenses Required

Licenses

Errors

Licenses are required for US EAR

Warnings

Information

Close Cancel

- Master data (including products)
- Inbound/outbound delivery requests

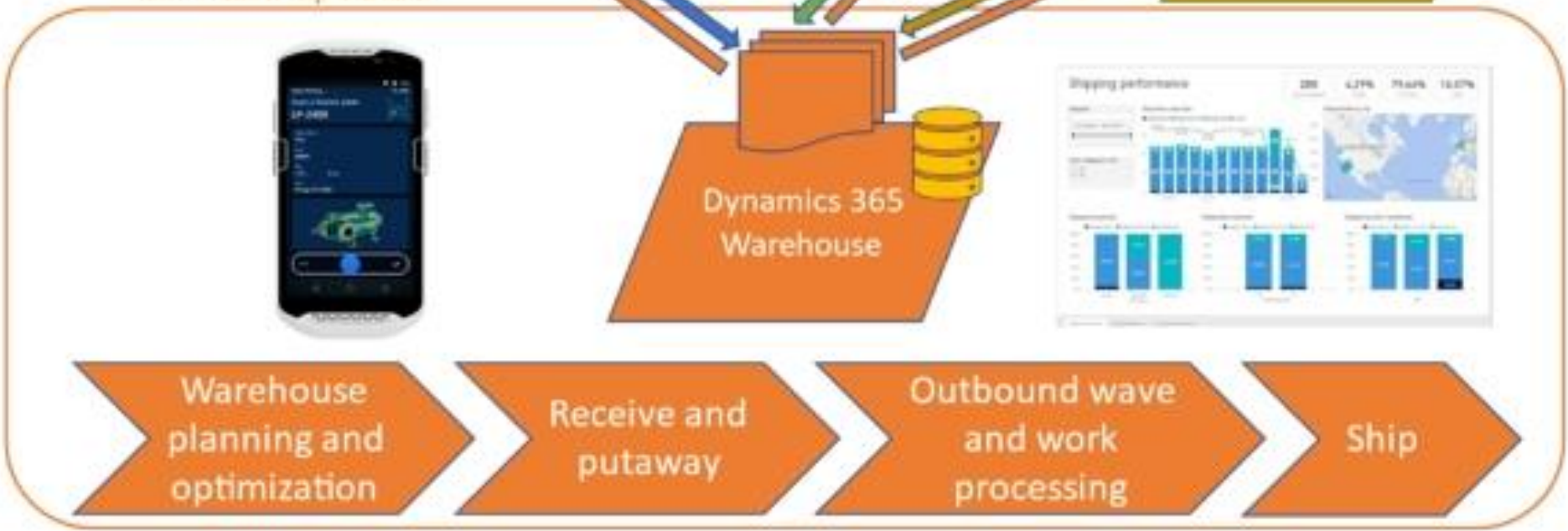
Other ERP or intelligent order management system

- Purchase
- Sales
- Return
- Transfer
- Production

Dynamics 365 ERP

Other integrations
(Carriers, material equipment, and so on)

- Delivery status updates
- On-hand updates



Warehouse planning and optimization

Receive and putaway

Outbound wave and work processing

Ship

Deprecated features



Service-based authentication for WMA

What is it?

- Current authentication method for warehouse mobile devices

Why are we deprecating it?

- For improved security

What do I do next?

- Switch to the new user-based authentication method



Load planning workbench

What is it?

- The combined *Load planning workbench* form

Why are we deprecating it?

- For performance


What do I do next?

- Start using the split Inbound and Outbound load planning forms





Q&A



Richtershaftin Day
Answers!!

Thank you!

